



Co-funded by the COSME programme
of the European Union

Discovering
Rural Europe

SUMMARY ROADBOOK

TREK&WINE IN SOUTHERN PRIORAT

www.hikingeurope.net

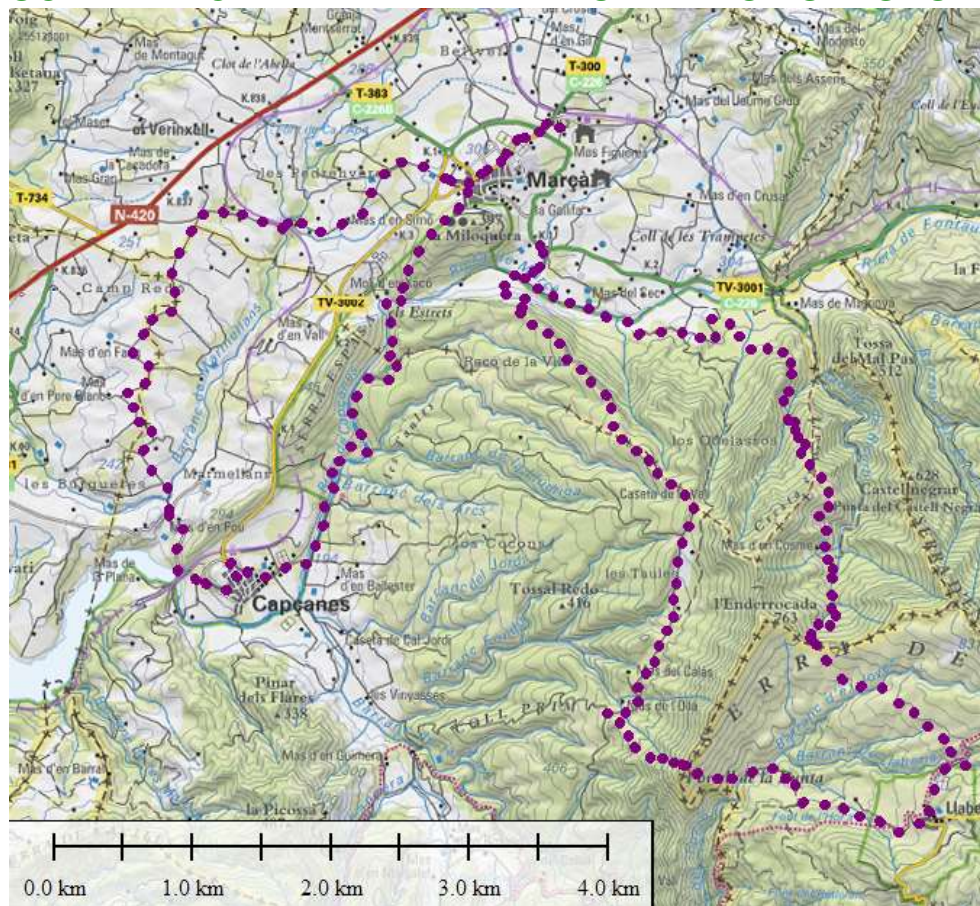
TOPIC OF THE ROUTE:

Wine trails and gastronomy in southern Priorat

ONE HIGHLIGHT TITLE OF THE ROUTE:

Enjoy, taste and discover Priorat wine trails

SCHEMATIC TRAIL MAP WITH NUMBER OF STAGES:



SMALL ARTICLE ABOUT THE HIGHLIGHTS:

The south of Priorat is sheltered by the Llaberia mountain range, a rocky Mediterranean mountain with great views over the sea and the cultivated land of Camp de Tarragona. Located in the DO Montsant territory, it is one of the unknown but stunning parts of Priorat.

NAME OF THE ROUTE: Trek&Wine in southern Priorat

INTRODUCTORY TEXT: The southern part of Priorat is surrounded by the impressive rocky mountain of Serra de Llaberia, with impressive views over the Mediterranean Sea. A place full of legends and history that offers tasty wines of DO Montsant...

**DESCRIPTION OF EACH STAGE / DAY
(Road Description):**

DAY 1: ARRIVAL AT PRIORAT AREA: Arrival by train at Falset-Marçà train station. Welcome by the local guide, introduction to the walking week giving all roadbooks and walking maps. Transfer to the accommodation Mas Figueres.

DAY 2: WALKING CARRASCLET TERRITORY: Circular walk up the Llaberia mountain range, which will bring you to the village of Llaberia, in the higher part of the mountain. Enjoy great views over this Mediterranean rocky mountain and the sea.

DAY 3: TWO WORLDS IN ONE: Round walk to Capçanes, a journey between the past and the present, following the ravine paths that seem wild if it weren't for the remains of old dry stone walls of the vineyards. Part of the walk goes among cultivated nowadays cultivated vineyards, well kept by the local farmers.

DAY 4: DEPARTURE: Transfer to Falset-Marçà train station and departure.

PACKAGES RELATED TO THE ROUTE

Between Camp de Tarragona and the lands of the Ebro, hidden behind the pre-littoral sierra at only 40 km. from the beach, we find the region of the Priorat. From north to south and from east to west, under the omnipresent eye of the Serra of Montsant, today a Natural Park, we find areas of great beauty and natural interest: the area of Siurana, the sierras of Pradell–l'Argentera or the Sierra of Llaberia with the majestic Mola. Very well-conserved places.

A territory ideal for trekking and in some cases climbing which can be found all around the Priorat geography.

So touring the Priorat is to immerse yourself in a land of character. Villages and landscapes form an inseparable whole which captivates the visitor. The Priorat is a land of contrasts, infused with peace, with typical countryside of dry agriculture and a very hilly geography which hides its' charm in vineyards, olive groves, verges and dry stone of the mountains.

In Spain, and nowadays in the whole world, is the name of Priorat already a synonym of wonderful and powerful wines. Moreover, here in this small region we find two different appellations of origin of wines (DOQ Priorat and DO Montsant).



GENERAL PRACTICAL INFORMATION:

Difficulty Level: Easy to Moderate

Situation: Starts and ends at Marçà, at an accommodation nearby the train station.

Number of stages / days: 4 days, 2 walking days

Total Distance: 30.8km

Total estimated time: 9h 40min

Cumulative elevation gain: +1100m

Cumulative elevation loss: -1100m

Maximum altitude (m): 700m

Minimum altitude (m): 190m

Signposting: Routes well signposted, and also with paintings, yellow lines for the wine trail and white and red for the GR.

Additional information or advice:

Physical skills and general instructions:

- ✓ The walking routes are not extreme but appropriate for people used to walking.
- ✓ Avoid the hottest moments of the day and bring always at least litre of water per person

Code of good practice:

- ✓ Take waste with you to dispose of it in the designated areas.
- ✓ Do not enter fields, vineyards, olive groves... unless the farmers let you
- ✓ Do not eat grapes, cherries, almonds, hazelnuts, or any other fruits from the fields unless the farmers let you

DESTINATION MANAGEMENT COMPANY (Name and Contact Details):

Name: Meritxell Omella Aznar

Company: El Brogit

Tel: +34 689006199

Website: www.elbrogit.com

Email: international@elbrogit.com



Co-funded by the COSME programme
of the European Union

Discovering
Rural Europe

www.hikingeurope.net